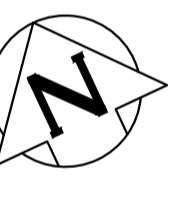
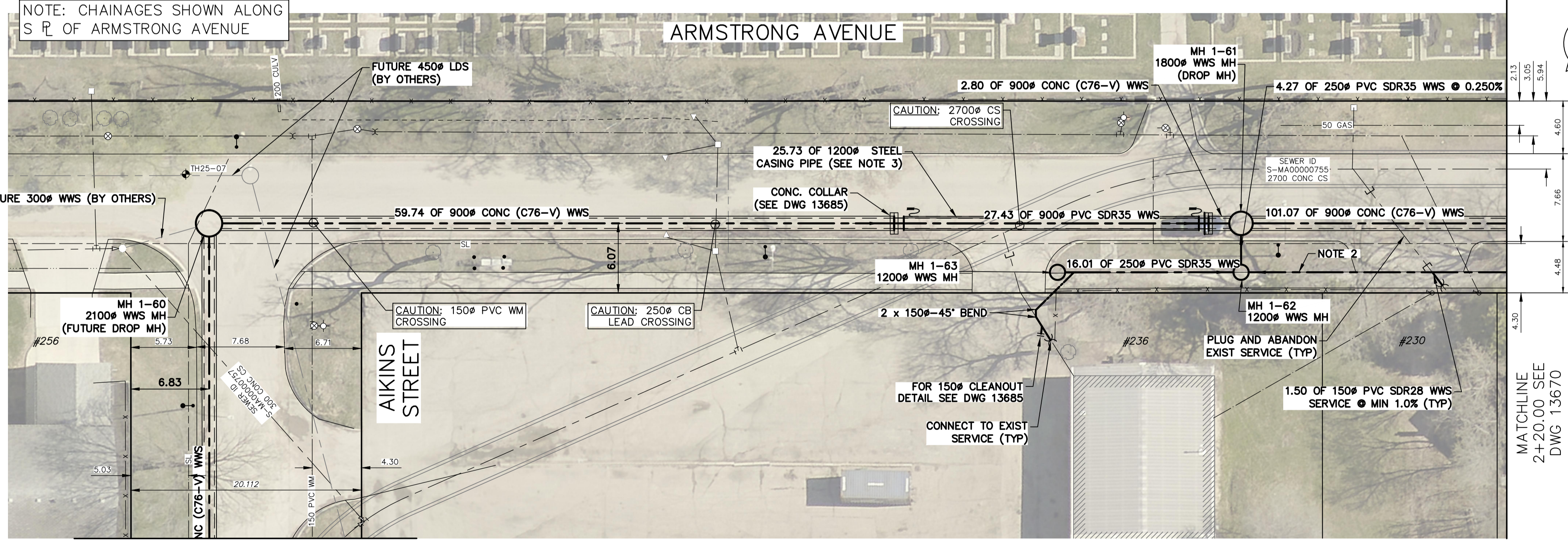


- NOTES:**
- WHEN INSTALLING PROPOSED WASTEWATER SEWERS ON ARMSTRONG AVENUE TAKE CAUTION WHEN CROSSING EXISTING RESIDENTIAL WATER SERVICES.
  - CONTRACTOR SHALL VERIFY ELEVATION OF EXISTING SEWER SERVICES AT PROPOSED DOWNSTREAM CONNECTION LOCATIONS PRIOR TO INSTALLATION OF COLLECTOR WWS TO ALLOW FOR CHANGES OF GRADE TO THE COLLECTOR WWS.
  - CASING PIPE SPECIFICATION:
    - OUTSIDE DIAMETER: 1219mm
    - WALL THICKNESS: 19.1mm
    - PIPE MATERIAL: STEEL
    - ASTM A252 GR2
    - PROTECTION: N/A
    - JOINT: WELDED
    - INSTALLATION: AUGER BORING
    - CARRIER PIPE TO BE SUPPORTED BY MANUFACTURED CASING SPACES. CASING ENDS TO BE SEALED WITH MANUFACTURED NEOPRENE RUBBER END SEALS.

SEWER SERVICE INFORMATION					
ADDRESS	STATUS	SIZE (mm)	COORDINATES AT JUNCTION	COORDINATES AT PROPERTY	REMARKS
#230 ARMSTRONG AVE	UNKNOWN	150 PVC	N=5534135.51 E=635327.96	N=5534122.53 E=635330.41	NONE
#236 ARMSTRONG AVE	ACTIVE	150 UNKNOWN	N=5534143.40 E=635297.57	N=5534138.12 E=635296.71	NONE

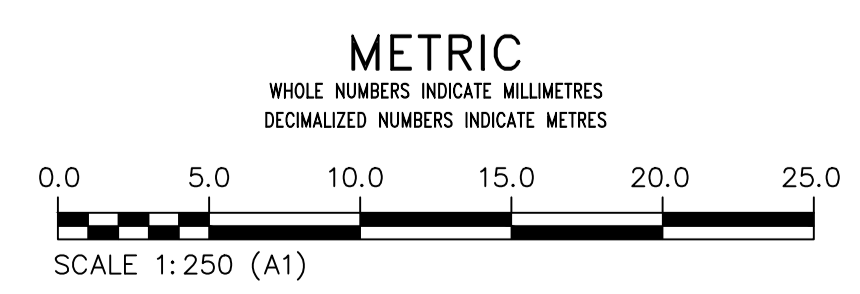
SEWER JUNCTION INFORMATION FROM SEWER VIDEO INSPECTION			
SEWER ID S-MA00000755			
DISTANCE FROM MH ID S-MH00000660			
DISTANCE	DIAMETER	CLOCK	
16.5	150	9	
52.9	150	12	
78.0	150	12	
109.7	150	12	
109.7	150	3	



**ENGINEERS GEOSCIENTISTS MANITOBA**  
 Certificate of Authorization  
 KGS Group  
 No. 245

FOR CONTINUATION  
SEE DWG 13668

FOR INDEX PAGE  
SEE DWG 13643



**WARNING**  
 IF POWER EQUIPMENT OR EXPLOSIVES ARE TO BE USED FOR EXCAVATION ON THIS PROJECT THE CONTRACTOR MUST:  
 1) NOTIFY THE GAS COMPANY OF THE PROPOSED LOCATION OF EXCAVATION.  
 2) TAKE PRECAUTION TO AVOID DAMAGE TO GAS COMPANY INSTALLATIONS.  
 SEE PROVINCIAL REGULATION 210/72 FOR DETAILS

**LOCATION APPROVED UNDERGROUND STRUCTURES**  
 SUPV. U/G STRUCTURES COMMITTEE DATE  
 NOTE:  
 LOCATION OF UNDERGROUND STRUCTURES AS SHOWN ARE BASED ON THE BEST INFORMATION AVAILABLE BUT NO GUARANTEE IS GIVEN THAT ALL EXISTING UTILITIES ARE SHOWN OR THAT THE GIVEN LOCATIONS ARE EXACT. CONFIRMATION OF EXISTENCE AND EXACT LOCATION OF ALL SERVICES MUST BE OBTAINED FROM THE INDIVIDUAL UTILITIES BEFORE PROCEEDING WITH CONSTRUCTION.

VERTICAL DATUM: CGVD28 (HT2.0 Geoid)	
HORIZONTAL DATUM: NAD83 (June 1990), Zone 14	
DESIGNED BY	MID
CHECKED BY	TLE
DRAWN BY	GEL
APPROVED BY	RBO
SCALE:	
HORIZONTAL:	1:250
VERTICAL:	1:50
ISSUED FOR CONSTRUCTION	2026/03/10 MID
DATE	DATE
NO.	REVISIONS

**KGS GROUP**

DESIGNED BY: MID  
 CHECKED BY: TLE  
 DRAWN BY: GEL  
 APPROVED BY: RBO  
 SCALE: HORIZONTAL 1:250, VERTICAL 1:50  
 ISSUED FOR CONSTRUCTION: 2026/03/10  
 DATE: 2026/03/12  
 CONSULTANT: DUANE BAKER

ENGINEER'S SEAL  
 ORIGINAL DRAWING SEALED BY:  
 M.A. IANKOVA-DEDOVA  
 2026/03/11  
 CONSULTANT DRAWING NUMBER: C1-28

**THE CITY OF WINNIPEG**  
 WATER AND WASTE DEPARTMENT  
 ENGINEERING SERVICES DIVISION

**ARMSTRONG SEWER RELIEF WORKS**  
 CONTRACT 1  
**ARMSTRONG AVENUE**  
 AIKINS STREET TO  
 84.5 W OF MAIN STREET

SHEET 28 OF 46  
 CITY DRAWING NUMBER: 13669